



LABO PEDAGOGIQUE AUDIO-VIDEO IP
NORME ST-2110 EN NMOS

Labo pédagogique Video IP 2110-NMOS : Schéma de l'Infra



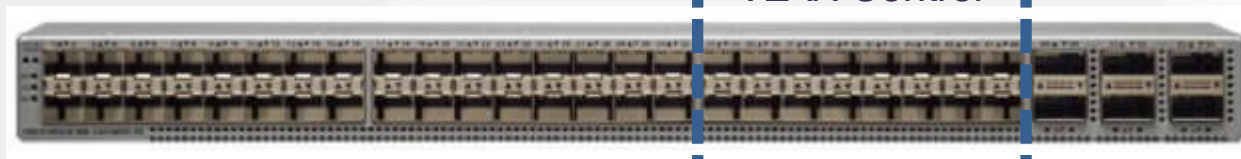
Labo pédagogique Video IP 2110-NMOS :

Equipements concernés

Cisco Nexus 9300 / 48x 1/10/25G / 6x 40/100G

VLAN DATA

VLAN Control



Riedel Muon
Decap



Destinations



Sources vidéo



Passerelle AJA



Telestream SPG8000a



Selenio network Processor



Passerelle AJA



Riedel Muon
Encap



ROUTING	Sources IP	Destinations IP
IPT-10G	<ul style="list-style-type: none"> IPT-10G IPR-10G 	<ul style="list-style-type: none"> Encap video 1 Encap video 2
Decap 1	<ul style="list-style-type: none"> IPT-10G Decap 1 	<ul style="list-style-type: none"> Encap video 1 Decap 1
Decap 2	<ul style="list-style-type: none"> IPT-10G Decap 2 	<ul style="list-style-type: none"> Encap video 1 Decap 2
PRISM Canal NMOS	<ul style="list-style-type: none"> IPT-10G PRISM Canal NMOS 	<ul style="list-style-type: none"> Encap video 1 PRISM Canal NMOS



Contrôle

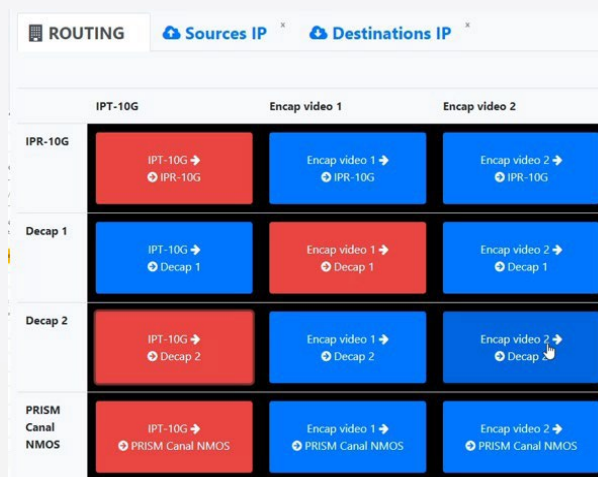


Telestream PRISM

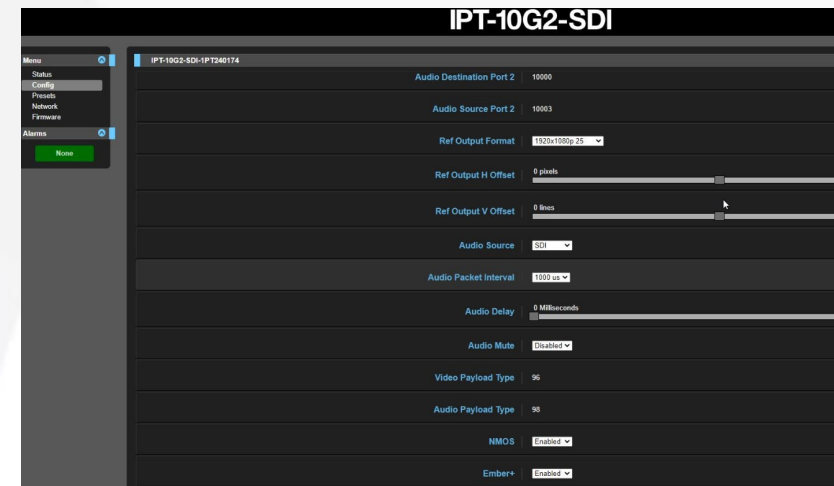
Labo pédagogique Video IP 2110-NMOS : Couches applicatives



Telestream PRISM



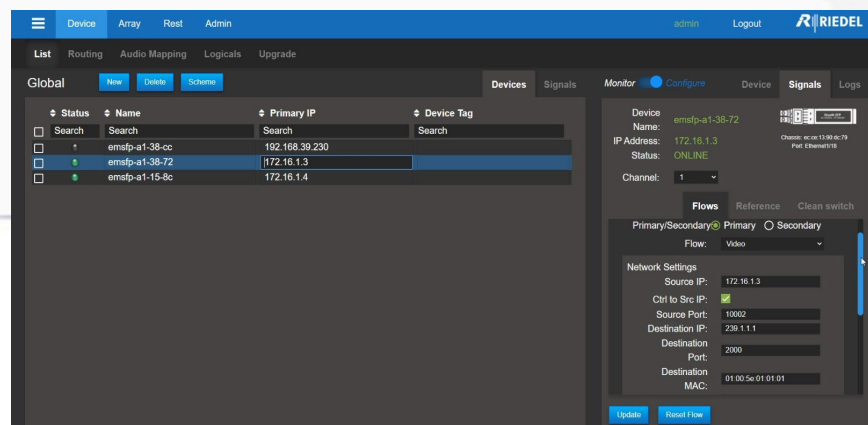
Controle



AJA IPT et IPR Control

```
C:\Users\emanuele>dns-sd -B _nmos-node._tcp
Browsing for _nmos-node._tcp
Timestamp A/R Flags If Domain Service Type Instance Name
16:50:22.284 Add 3 29 local. _nmos-node._tcp. node_prism-mpx2-s010251_2157
16:50:22.285 Add 3 29 local. _nmos-node._tcp. IPT-10G2-SDI-IPT240174
16:50:22.285 Add 2 29 local. _nmos-node._tcp. IPR-10G2-HDMI-1PR230407
```

Command line



MN-SET



API/NMOS Control



DU SENS DANS VOS PROJETS

Site web : www.IIFA.fr / X : @iifa_medias / LinkedIn : company/iifa-medias

IIFA, SAS au capital de 70 000 €

SIRET : 40422717500027 - Code APE : 8559 A

Numéro de déclaration d'Activité (NDA) : 91 300 137 430

65, avenue Jean Jaurès – 30900 NIMES

T: 04 66 62 00 29 – F: 04 66 62 00 74 – iifa@iifa.fr / www.iifa.fr